



FiberVision GmbH
 Jens-Otto-Krag-Straße 11
 D-52146 Würselen

Telefon: +49 2405 4548-0
 Telefax: +49 2405 4548-14

CAMAT® – Data Sheet

We offer two different versions of CAMAT®: one is restricted to grayscale, the other is capable to recognize colors.

Type	CAMAT® 65 C	CAMAT® 38
Sensor	782 x 582 SONY, 1/2" CCD color, progressive scan	640 x 480 SONY, 1/3", CCD s/w, progressive scan
Video output	SVGA Grayscale/Color	SVGA Grayscale
Signal processor	Analog Devices ADSP 2181 with 40 MHz	Analog Devices ADSP 2183 with 50 MHz

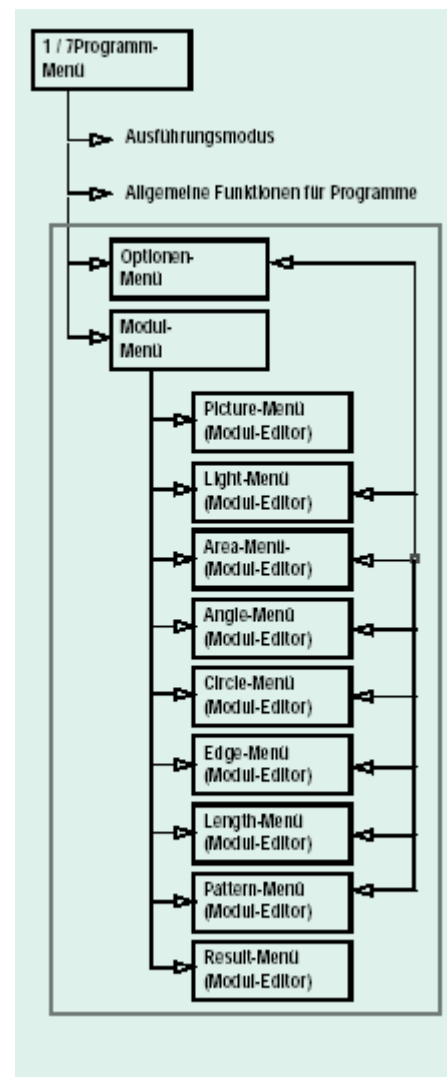
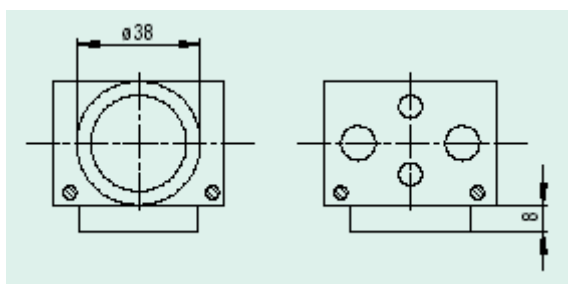
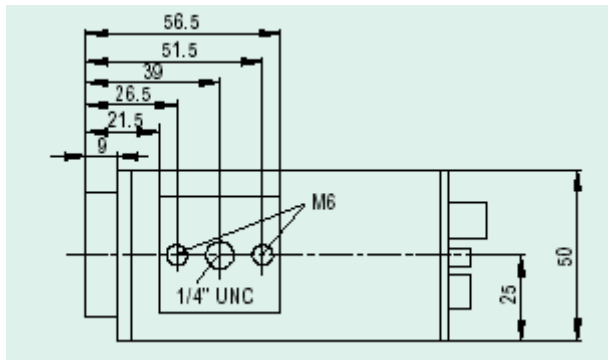
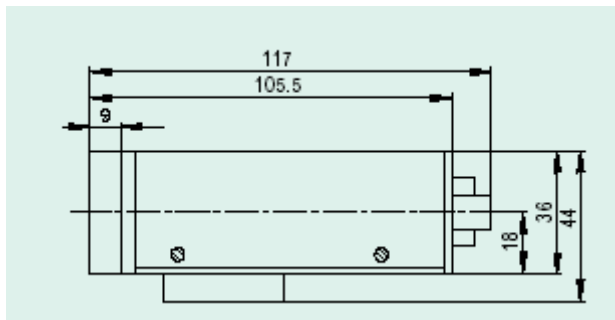
Common Data – both Types	
ADU / ADC	8-bit-ADU with digital clamping
Interfaces	1 serial V. 24 (RS-232)
Image pages	1
Min. exposure time	500 microseconds – 10 seconds
Digital inputs, optodecoupled	4 inputs for 12 – 24 V
Digitale outputs, optodecoupled	4 outputs, 150 mA each
External control	<ul style="list-style-type: none"> - Through PLC - Flash control - Triggered evaluation
Power supply	12 VDC ± 20%, not controlled, 600 mA
Operation temperature	- 5°C – 45°C / 23°F – 113°F
Operation humidity	max. 80%
Shock resistance	< 70 g
Vibration	< 7 g (11 – 200 Hz)
Geometry	111 x 50 x 45 mm ³

	(without lens)
Operation languages	German, English, French, Italian, Dutch, Portuguese, Spanish, Turkish- the languages can be easily switched from the menu

Scope of delivery

- Smart-Camera with image processing software
- Keypad
- V24-cable
- PLC-cable
- SVGA-Kabel
- Power supply unit with cable
- CAMAT®- Reference

Lenses, lightings and monitors are to be ordered separately



www.fibervision.de
info@fibervision.de
