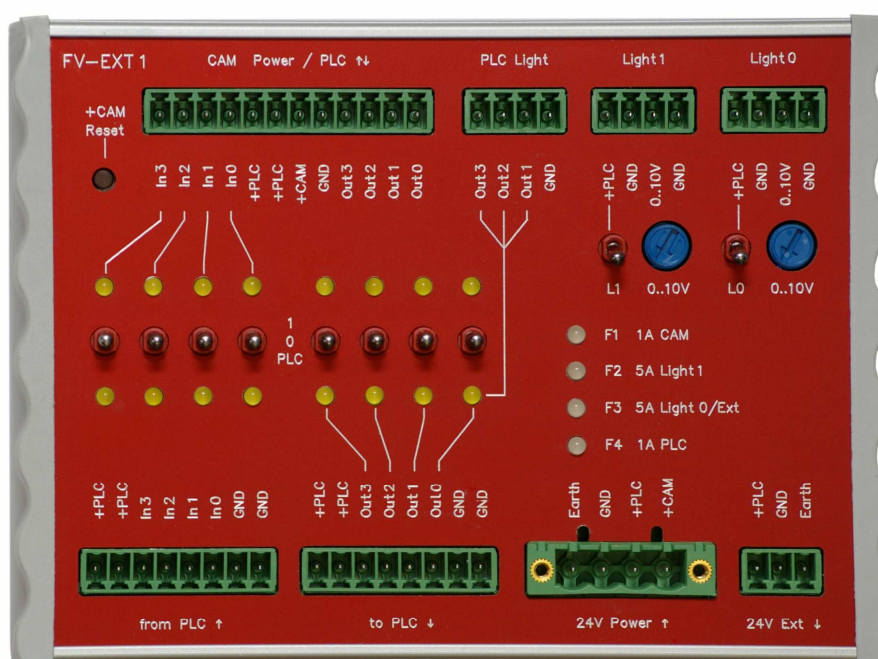


Connection Module FV-EXT1

The handy devices of the connection module series FV-EXT are designed for easy integration of *Vision Components (VC)* smart cameras into your production environment. They provide a central interface for all supply and communication cables. Furthermore they offer vast opportunities for test and diagnosis.



Product Features

- Interface for power/PLC-cables for integration of VC based smart cameras (e.g. Caminax[®], pictor[®]) into the production environment
- All digital I/Os can be switched separately on high level, low level and PLC-level
- Status display via LEDs for fuses and Digital I/Os
- Short circuit resistant through automatic resetting fuse with status display
- Power supply for two lightings (24V), switchable and dimmable with 0 – 10V Control voltage (< 1mA), e.g. for lightings of the *vicolux[®]*-series by *Vision & Control*
- Separate power supply for PLC and camera
- Separate connection for earthing and ground
- Coded and labelled Phoenix plugs included
- Top hat rail setup set included

Technical Data

Operating voltage	24VDC
Dimensions (W x H x D)	140mm x 45mm x 105mm
Cable-cross-section 24V main supply	max. 2,5mm ²
Cable-cross-section terminal clamps	max. 1,5mm ²
Fuse 5A (short-circuit resistant)	2 Lightings
Fuse 1A (short-circuit resistant)	1 Camera 1 Production environment
Status display LED	8 Camera I/Os 8 PLC I/Os 4 Status of fuse (multicoloured)
3 stage switch (1/0/PLC)	4 Camera inputs 4 PLC inputs
Two-stage switch (1/0)	2 Power supply lighting
Controller (0...10V)	2 Control voltage lighting
(Protected) push button	1 Reset camera
Terminal clamps	3 x 4-pin Lightings 1 x 12-pin Camera 2 x 8-pin Process environment 1 x 3-pin 24V-output for extern 1 x 4-pin Power (screwable)
Weight	450g
Operating temperature	0°C – 45°C
Air humidity	80%, not condensing

Order Number

Connection module Box EXT1	FV-EXT1
----------------------------	---------